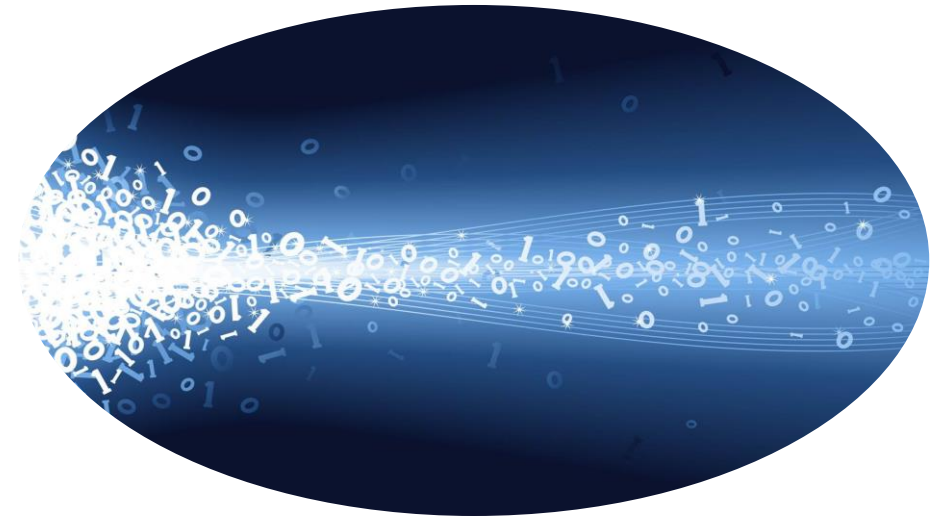


# The Future of Work: Why LinkedIn Should Kill the Resume and Launch the Age of the Experience Graph



Presented by:  
Garry Golden

**LIFE2018** LANDMARK  
HOUSTON INNOVATION  
FORUM & EXPO

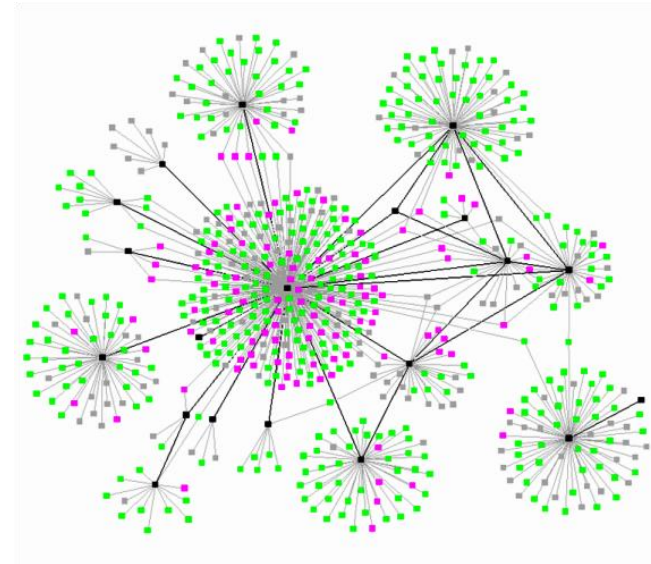
August 21, 2018

# Scenario for 2020s

## Moving Beyond the Resume with Experience Data



**Linked** 



**Rise of the  
Experience Graph**



# In the News

In Fall 2018, Stanford Business School will pilot a program with **Experience.ai** to capture experience data from learning, project performance and decision processes within case study groups. Stanford's vision is for every student to retain rights to experience data and build a critical personal digital asset for the future.

True

False



**Context of the *Creepy Line***

**Google**

**Inevitability of Dealing with the *Creepy vs Compelling Line* in..**

**Data+AI Driven Work Experiences**

# Emergence of Key Datasets & AI-driven World of Work



**Social  
Data**



**Health  
Data**



**Device +  
Infrastructure**

**EXPERIENCE  
API**

"I did this..."

**Learning & *Doing*  
Experience Data**

# Signal of Change from the Learning & Development (L&D) Community



EXPERIENCE  
API

**Activity Streams**  
<Actor, Verb, Object>

**“I did this”**

**Learning Management Systems (LMS)**

***& Beyond?***

# The Case for ExperienceAPI (xAPI) – Capturing the *Doing Data*



Course  
*Outputs*



**“I did this...”**

Statements



Real World  
*Outcomes*

**Assumptions 2020 – 2030:**

- Enterprise-grade Software Integration with ExperienceAPI (xAPI)
- Experience Data Appears Inside School, Workplace & Beyond



# Scenario: Talent Embraces Experience Capture Analytics

- Sarah **read** an article on blockchain for automating compliance
- Sarah **opened** an Evernote folder on blockchain solutions
- Sarah **watched** a Youtube video introducing the Ethereum blockchain
- Sarah **searched** for Ethereum Meetups in NYC
- Sarah **attended** the Crypto Compliance conference in NYC
- Sarah **created** a List of 'Ethereum Developers' (People) on Twitter
- Sarah **interviewed** *the Head of Blockchain Solutions at JPMorgan*
- Sarah **mentored** *with Joe Lubin co-Founder of Consensys*
- Sarah **completed a course** on Ethereum's Solidity programming language
- Sarah **demonstrated** her pilot Ethereum application at a NYC Meetup
- Sarah **taught** a Coursera MOOC on Ethereum for KYC / AML
- Sarah was hired as Lead Developer of Blockchain Compliance Solutions at Fidelity



**"I did this..."**  
**Statements**

# Case Study: Caterpillar



**Understanding  
LMS/CMS Activity**

**Expanding  
Video-based Analytics**

**ExperienceAPI (xAPI) L&D integration with focus on training for Service, Sales, Leadership & Marketing.**

When trying to help someone learn, the team considers these three vital questions:

**1. Where does the learner want to go?**

**2. What does the learner know?**

**3. How can we develop the individual?**



Courses Passed	5,61	Track-Type Tractor Family	31,334	MORE
----------------	------	---------------------------	--------	------

MORE	MORE	MORE
------	------	------

# Signal: Virtual Reality + ExperienceAPI

CenarioVR + EXPERIENCE API

amazon

float®



**"I did this..."**

# Signal: Computer Vision + ExperienceAPI

**Computer Vision  
on Jobsite**



## The world's first deep learning enabled video camera for developers

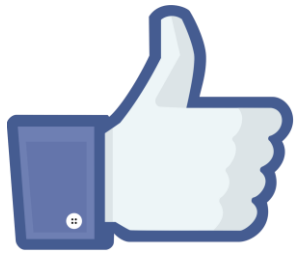
AWS DeepLens helps put deep learning in the hands of developers, literally, with a fully programmable video camera, tutorials, code, and pre-trained models designed to expand deep learning skills.

[Buy Now](#)

[Register your DeepLens](#)



# Scenario for 2020s: Early Adopters Embrace Experience Analytics



EXPERIENCE  
API

Assumption to Explore

**By 2025, Experience Data Will Become  
Our Most Valuable Digital Asset**

  
and Controversial

**If we capture experience data...**



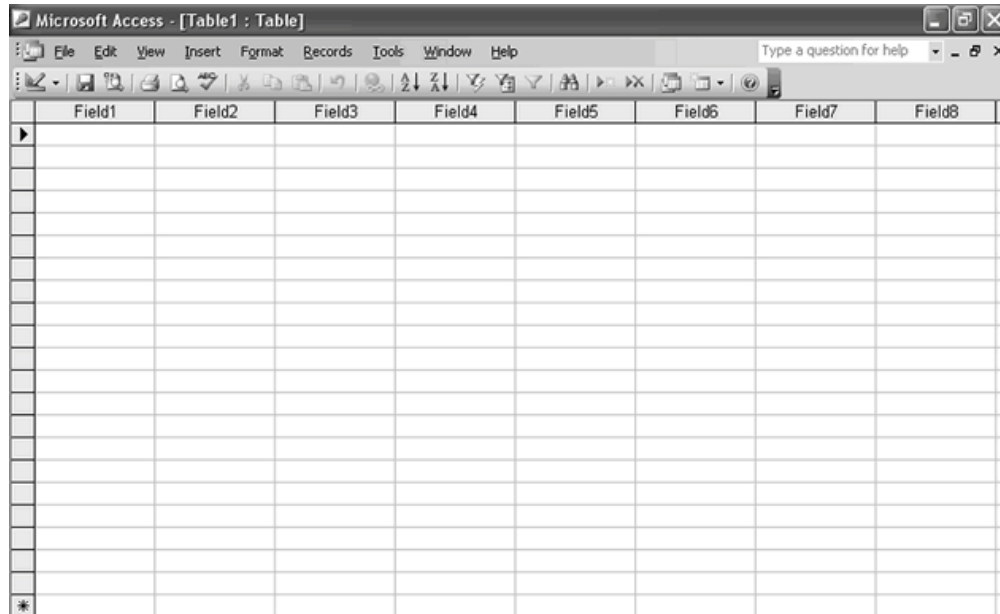
**“I did this...”**  
Statements

**How do we approach regulations?**

**How do we avoid the creepy line?**

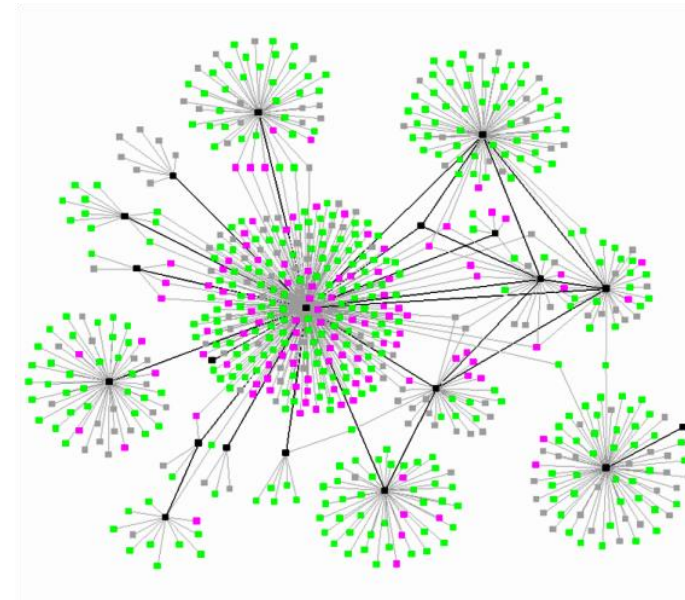
**How do we make sense of it?**

# Building a Connected Data Foundation for Innovation



A screenshot of the Microsoft Access application window. The title bar reads "Microsoft Access - [Table1 : Table]". The menu bar includes "File", "Edit", "View", "Insert", "Format", "Records", "Tools", "Window", and "Help". Below the menu bar is a search bar with the text "Type a question for help". The main area displays a table with 8 columns labeled "Field1" through "Field8" and approximately 20 empty rows. A small asterisk icon is visible in the bottom-left corner of the table area.

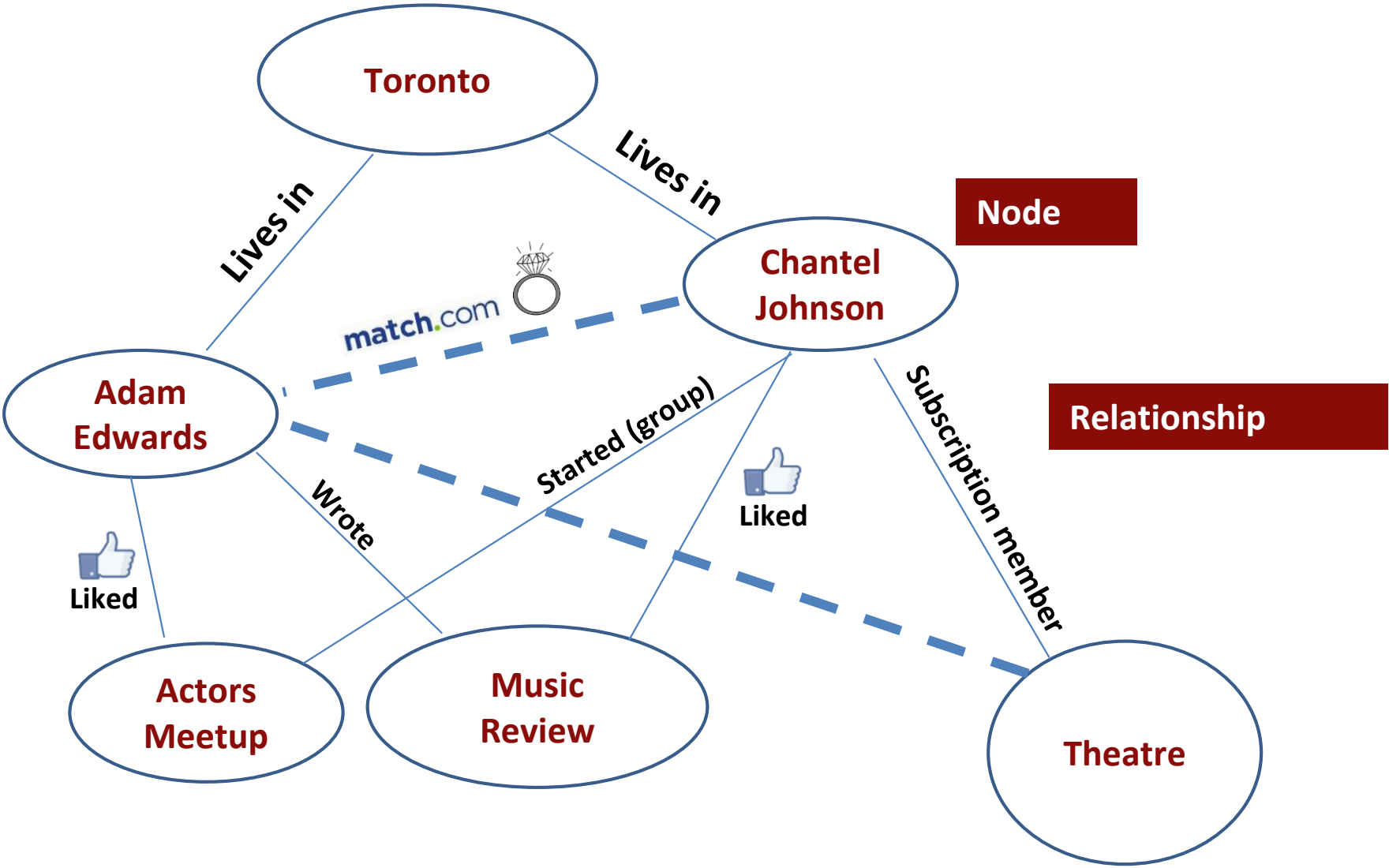
**Tables = Past**



***Graph Thinking = Future***

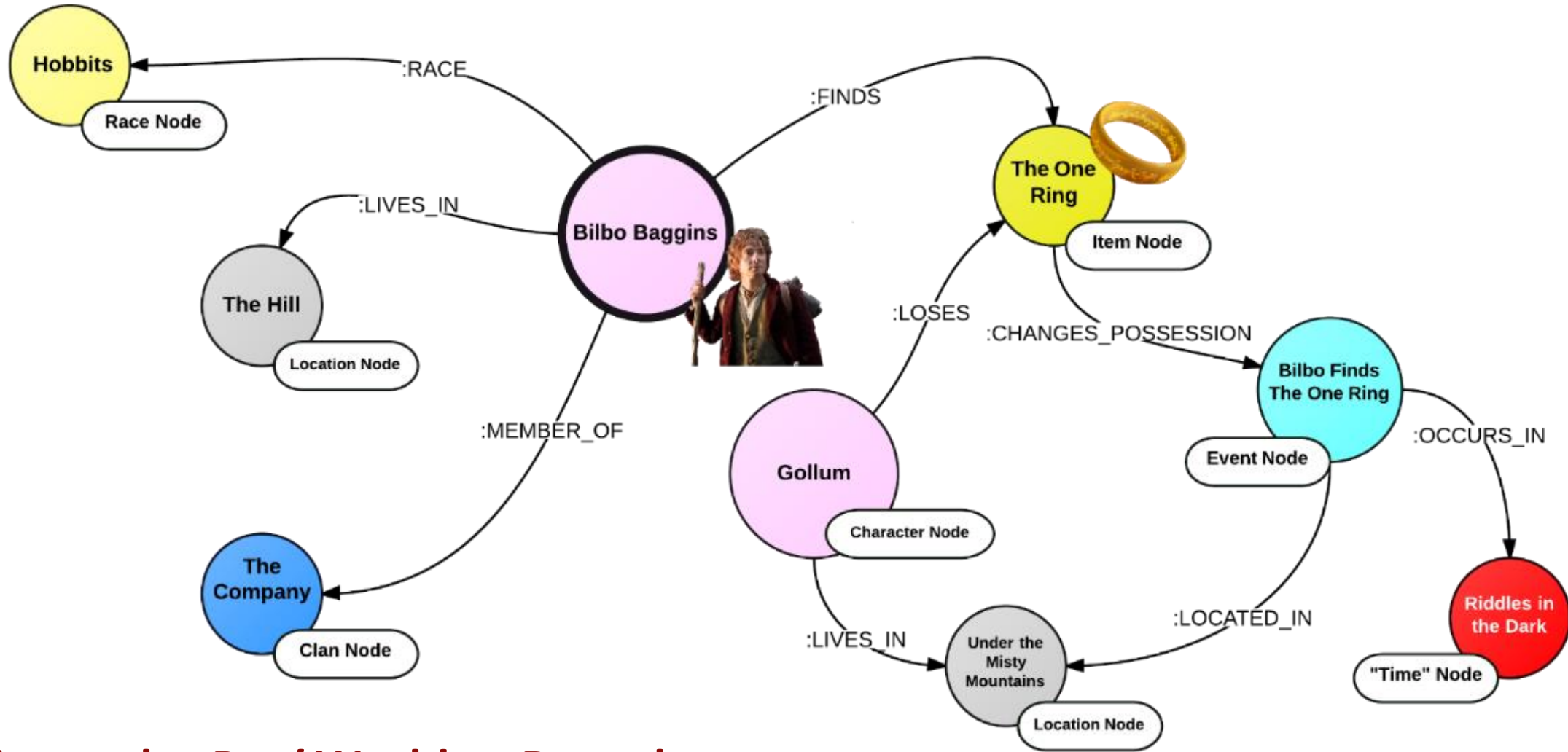


# Graph Database = Understanding Relationships + Connections



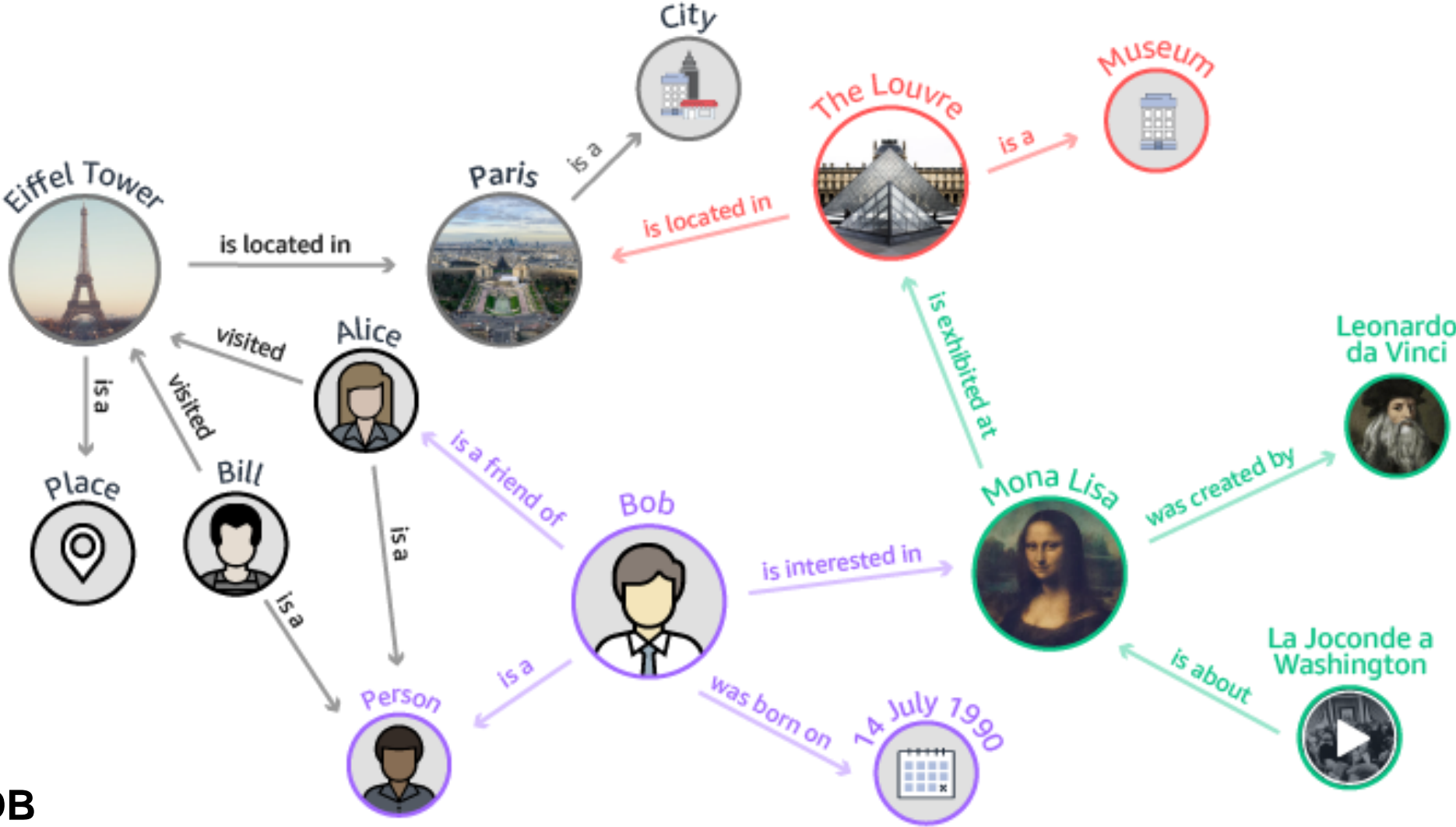


# Graph Solutions for Understanding the Journey vs Outcomes



Mirrors the *Real World* to Reveal  
Influencer Profiles, Decision Pathways and Recommendations

# Mainstreaming Solutions for IT Teams



Neptune Graph DB

# Real World Product = Enterprise Knowledge Graphs



the answer company

THOMSON REUTERS

OCTOBER 23, 2017

Thomson Reuters Launches first of its kind Knowledge Graph Feed allowing Financial Services customers to accelerate their AI and Digital Strategies

Graph network of 2 billion relationships brings to life a comprehensive view of the financial ecosystem so that users can uncover new, unexpected or difficult to find insights from connected data.

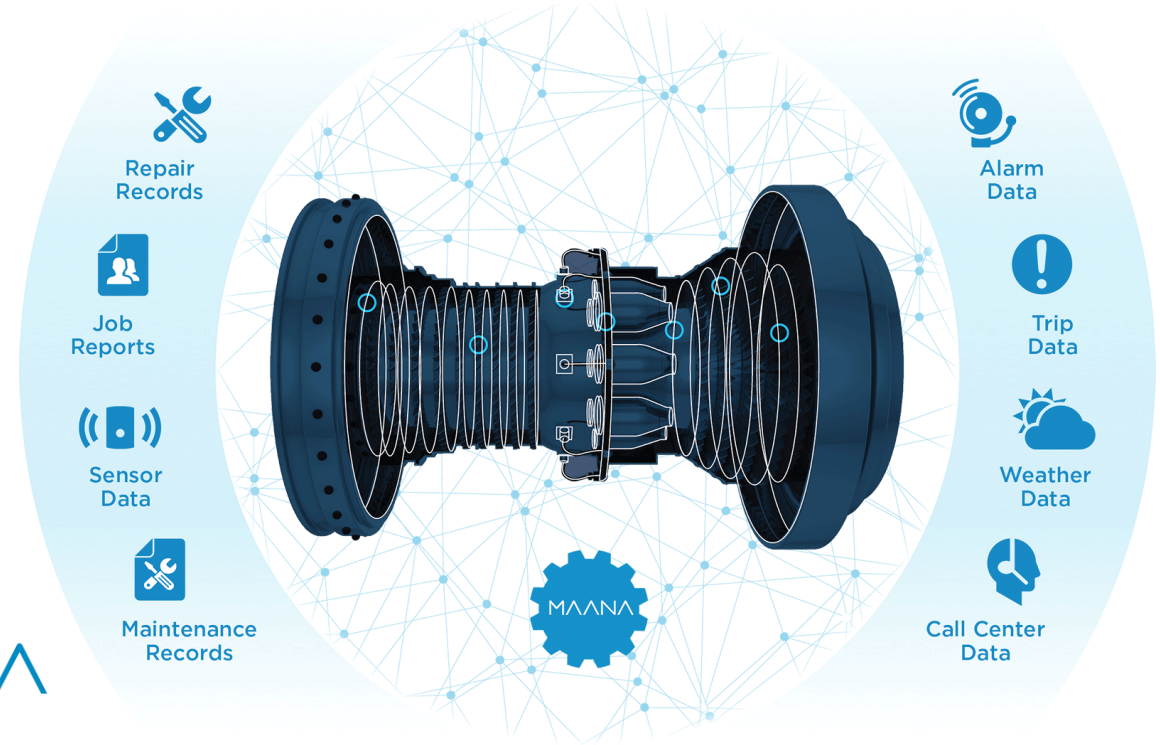
# Rise of Enterprise Knowledge Graph Vendors

## Knowledge Graph Applications

- ❑ Discovery & Dissemination
- ❑ IoT for Supply Chains;  
Predictive Maintenance
- ❑ Natural Language Processing  
(Voice to Report Generation)
- ❑ Q&A Datasets

MAANA

## Maana Knowledge Graph



# Real World Product = The Economic Graph



**Members – Companies – Jobs – Skills – Schools – Knowledge**

# Learning Curve

**Experience Analytics**  
**Learning Record Stores**



**Graph Analytics**



# Future of Work & Experience Graph – 2020s – 2030s

## *Key Questions & Implications*

- Becoming a Data-driven Culture (More Transparency & Accountability)*
- Privacy: Ownership vs Access Spectrum of Experience Data*
- Future Value of Experience Datasets in Training A.I. (ML/DL)*
- Deciding on Pilot Cases vs Vision of Organization-wide Roll Out*

## *Uncertainties*

- xAPI Evolution alongside Semantic/RDF & Knowledge Graphs*
- xAPI Integration by Enterprise Software Providers*
- Adoption of Experience Graph by Niche Job Functions vs General Positions*
- Techno-solutionist Over-Engineering?*

**Thank you!**



**Learn More:  
[garrygolden.com/August21](http://garrygolden.com/August21)**

**Garry Golden  
[garrygolden@gmail.com](mailto:garrygolden@gmail.com) (Two Rs)**

